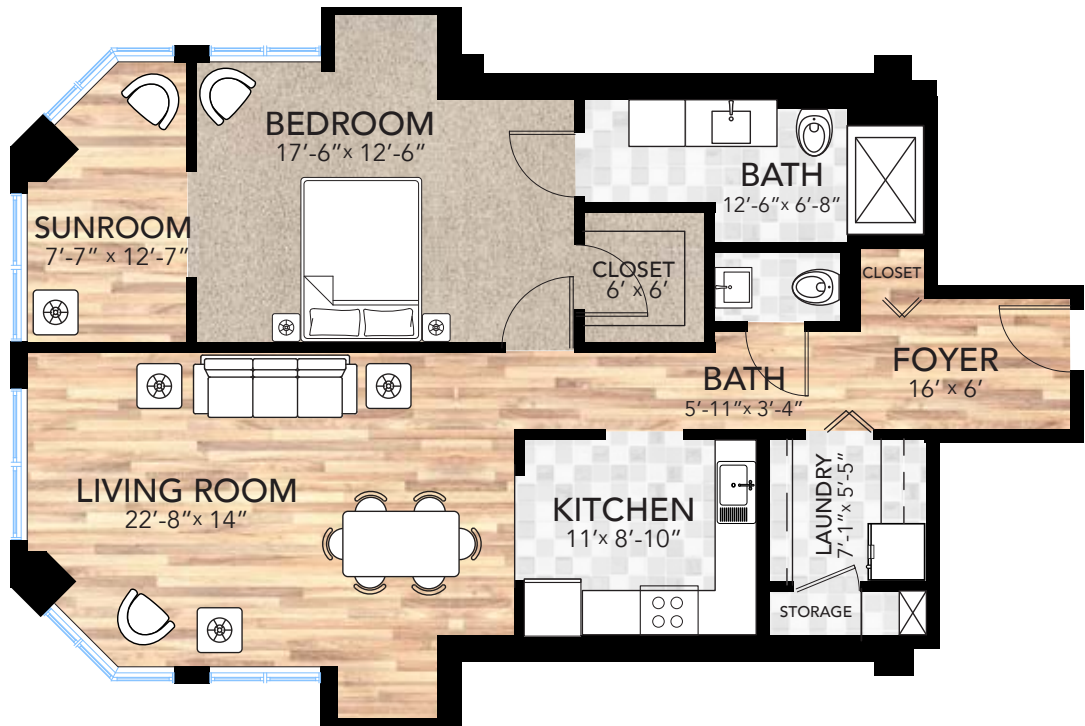




# FRASIER

The Peaks & The Prairies Floor Plans

**Vermilion Peak** One Bedroom | Sunroom | 1.5 Bath  
1,140 Square Feet



**Lavender Peak** Two Bedroom | Sunroom | 2 Bath  
1,170 Square Feet



# Grizzly Peak

One Bedroom | Den | Sunroom | 1.5 Bath  
1,380 Square Feet



# Longs Peak

Two Bedroom  
Sunroom | 2 Bath  
1,430 Square Feet



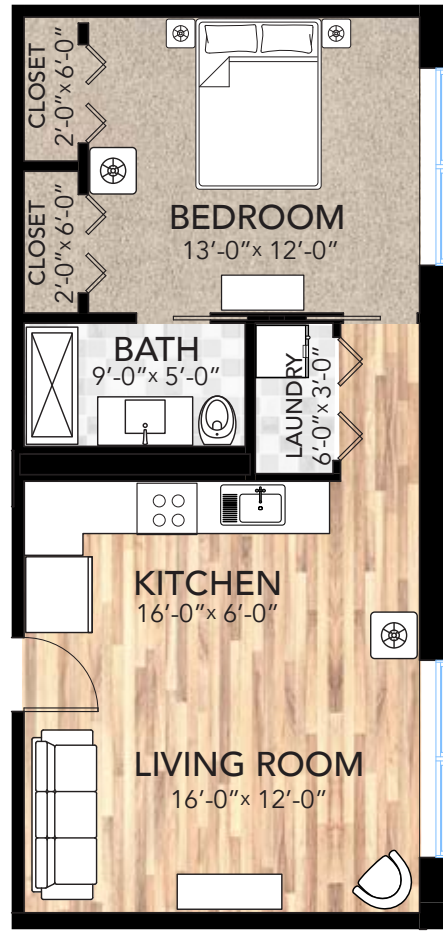
The Peaks North Floor Plans





## Elk Mountain

One Bedroom | 1 Bath  
560 Square Feet



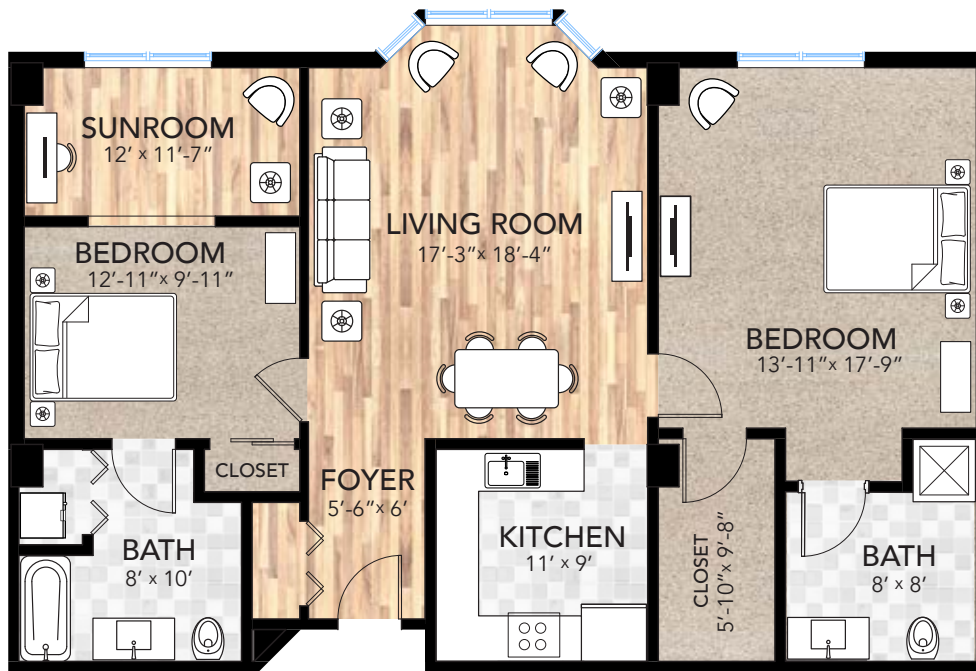
## Bison Peak

One Bedroom | 1.5 Bath  
840 Square Feet



## Mount Jackson

Two Bedroom | Sunroom | 2 Bath  
1,240 Square Feet



## Crestone Peak

Two Bedroom | Den | Sunroom | 2 Bath  
1,650 Square Feet









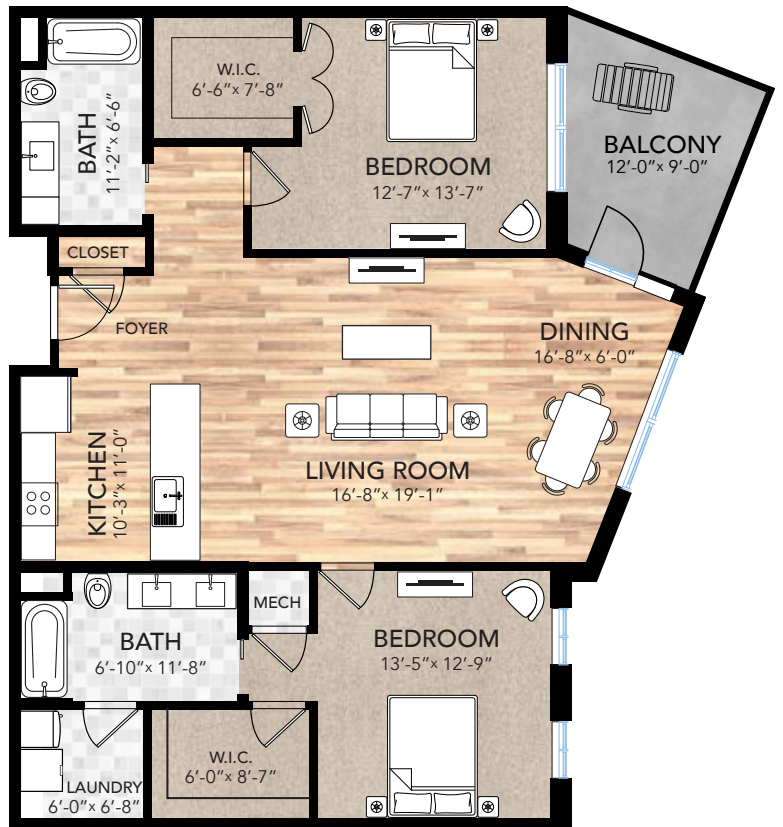
## Aspen

One Bedroom  
Den | 1.5 Bath  
1,149 Square Feet



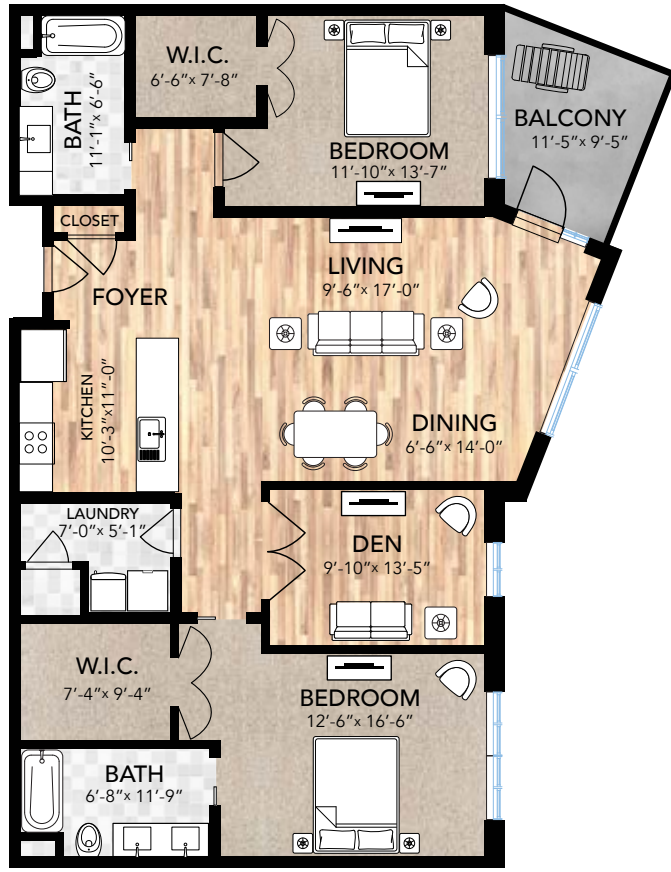
## Crested Butte

Two Bedroom  
2 Bath  
1,298 Square Feet



# Monarch

Two Bedroom  
Den | 2 Bath  
1,543 Square Feet



# Winter Park

Two Bedroom  
Den | 2.5 Bath  
1,904 Square Feet



# The Peaks & The Prairies Floor Plans



# FRASIER

350 Ponca Place, Boulder, CO 80303  
720.562.4440 | [FrasierMeadows.org](http://FrasierMeadows.org)

