

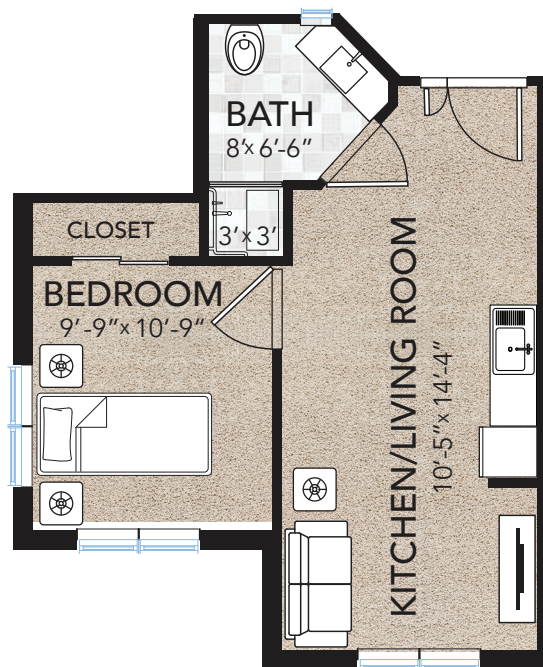
## 453 Plan

One Bedroom | Kitchenette-Living Room | 1 Bath  
453 Square Feet



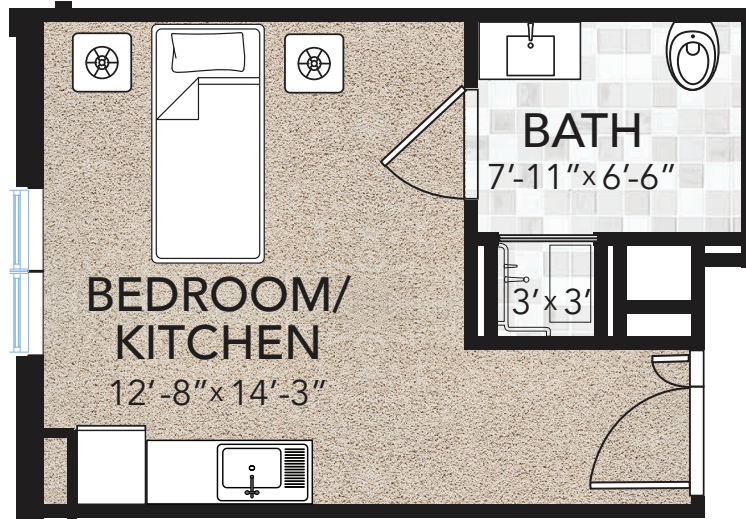
## 408 Plan

One Bedroom | Kitchenette-Living Room | 1 Bath  
408 Square Feet



## 286 Plan

One Bedroom Studio | 1 Bath  
286 Square Feet



## Notes

---

---

---

---

---

---

---

---

---

---

---

---



## The Meadows Pricing Sheet

### Assisted Living & Memory Support

Assisted Living	Square Footage	Monthly Fee Member*	Monthly Fee Non-Member	Monthly Fee Additional Person
<b>Studio</b>	270-280	\$8,341	\$9,268	\$4,943
<b>One Bedroom</b>	390-400	\$9,055	\$10,061	\$4,943
<b>One Bedroom with or without Patio</b>	440-460	\$9,470	\$10,523	\$4,943
<b>One Bedroom</b>	580	\$9,975	\$11,084	\$4,943

Memory Support	Square Footage	Monthly Fee Member*	Monthly Fee Non-Member	Monthly Fee Additional Person
<b>Studio</b>	270-280	\$10,091	\$11,212	\$6,346
<b>Studio Plus</b>	360	\$10,367	\$11,519	\$6,346
<b>One Bedroom</b>	390-410	\$10,787	\$11,986	\$6,346
<b>One Bedroom</b>	450	\$11,263	\$12,515	\$6,346

\* Members are residents of Frasier who have paid an entrance fee.  
 Rates effective July 2023 and subject to change.  
 For pet care, there is an additional charge of \$350 per month,  
 with a \$350 one-time, non-refundable fee.

